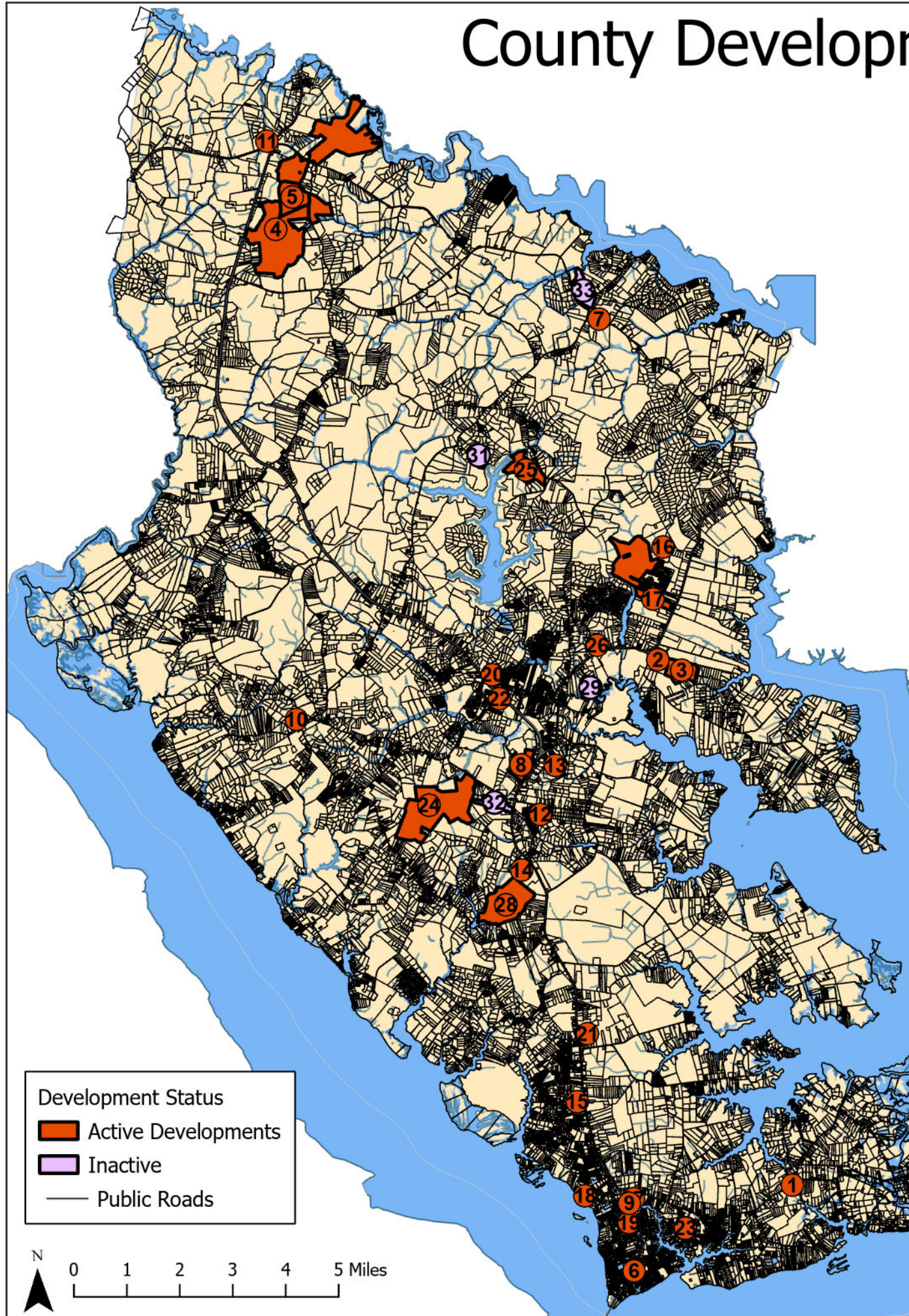


County Developments- 2024 3rd Quarter



Number	Development	Active Status	Review Status
1	Achilles Open Broadband	Active	Awaiting LDP Application
2	Brent & Becky's Open Broadband	Active	Awaiting LDP Application
3	Camilla Solar Amendment	Active	Approved
4	Carvers Creek Solar Phase 1 Amendment	Active	Approved
5	Carvers Creek Solar Phase 2 Amendment	Active	Awaiting LDP Application
6	Dunkin Donuts	Active	Approved
7	Dutton Fire Station 4 Open Broadband	Active	Awaiting LDP Application
8	Foxmill Centre Site Plan Amendment	Active	Under Staff Review
9	Freeman Commercial Drive Thru Amendment	Active	Approved
10	Gateway Private School	Active	Awaiting LDP Application
11	Glenns Food Mart	Active	Awaiting Resubmittal
12	Gloucester High School Expansion	Active	Awaiting Resubmittal
13	Gloucester Mathews Humane Society	Active	Under Staff Review
14	Miller's Services Headquarters	Active	Awaiting Resubmittal
15	New Life Ministry Center	Active	Awaiting Resubmittal
16	Patriot's Walk Phase 2 Amendment	Active	Approved
17	Patriot's Way	Active	Under Staff Review
18	River Club at Twin Island Amendment	Active	Awaiting LDP Application
19	Riverside Hayes Medical Center Parking Amendment	Active	Approved
20	Riverside Walter Reed Cancer Center Amendment	Active	Approved
21	Safe Harbor Self Storage Expansion	Active	Approved
22	Shephard's Way Apartment	Active	Awaiting Resubmittal
23	Swiss Legacy Development Plan Amendment	Active	Approved
24	The Reserve at Gloucester Village- Phase 2	Active	Awaiting Resubmittal
25	Verizon Wireless Figg Shop (Co-Location)	Active	Under Staff Review
26	Ware Academy Phase 2	Active	Approved
27	Wells Fargo ATM (York River Crossing Shopping Center)	Active	Awaiting LDP Application
28	Winterberry Solar Amendment	Active	Under Staff Review
29	Cow Creek Solar	Inactive	Awaiting Resubmittal
30	Haywood Development Amendment	Inactive	Approved
31	Stillwater Landing	Inactive	Awaiting LDP Application
32	The Reserve at Gloucester Village- Phase 1	Inactive	Approved
33	Under The Stars	Inactive	Awaiting Resubmittal